

Lea madia H73 Sideboard

design Paolo Vernier, 2019



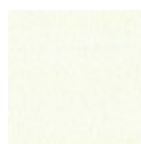
Lea sideboard, storage unit for living area with swing doors in wood or covered in fabric, faux leather or leather. Top in ceramic.

Lea sideboard is available in two versions: with a height of 55 cm or 73 cm. The 55 cm version features an open shelf in glass.

Supported by the conical feet that maintain the line of the collection, the Lea sideboard is characterized by the extreme lightness of the shapes and the soft design. The coatings of the doors embrace the choice of elegant fabrics or traditional materials making it versatile and original to furnish contemporary environments with continuity.

Colors and Materials

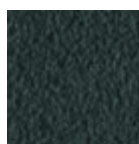
Structure



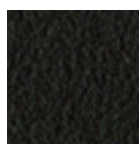
White steel



Sand steel



Grafite steel



Brown steel

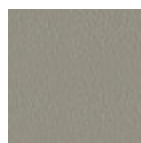


Black steel

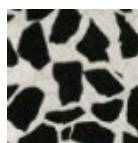


Black Nickel

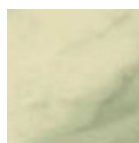
Coating



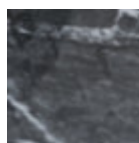
Laquered MDF
5 Colors



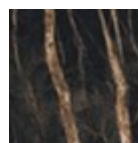
Venetian glossy
ceramic



Ceramic with effect
calacatta marble
1 color



Black greek glossy
marble ceramic



Noir desir glossy
ceramic marble

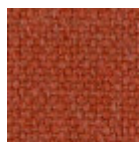
Extensions



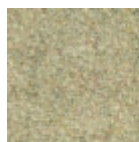
Bubble fabric
14 Colors



Carabù fabric
15 Colors



Cotton Club fabric
13 Colors



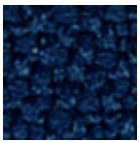
Fenix Wool fabric
13 Colors



Hot fabric
14 Colors



Main Line Flax fabric
16 Colors



Mirage fabric

6 Colors



Scubidù fabric

10 Colors



Second fabric

11 Colors



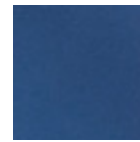
Visual fabric

11 Colors



Velvet Superb

15 Colors



Flexy faux leather

5 Colors



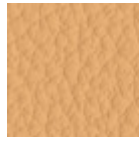
Secret faux leather

22 Colors



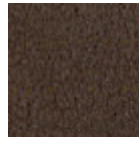
Vintage faux leather

12 Colors



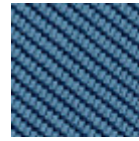
Fiore leather

18 Colors



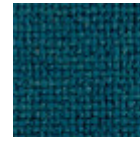
Vintage leather

4 Colors



Tessuto Oceanic

13 Colors



Manhattan fabric

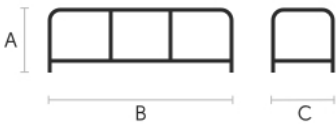
13 Colors



Yoredale fabric

14 Colors

Dimensions



	A (cm) (inch)	B (cm) (inch)	C (cm) (inch)
Lea H73 (cm)	73	210	48
(inch)	28.7	82.7	18.9
Lea H55 (cm)	55	180	40
(inch)	21.7	70.9	15.7

Volumetric Details

Weight 90 Kg

Volume 1.52 mc

Package 2

Downloads

[.3ds Lea madia h73 \(zip\)](https://www.midj.com/images/uploads/resources/3d-midj-lea-madia-h73-3ds.zip) - <https://www.midj.com/images/uploads/resources/3d-midj-lea-madia-h73-3ds.zip>

[.dae Lea madia h73 \(zip\)](https://www.midj.com/images/uploads/resources/3d-midj-lea-madia-h73-dae.zip) - <https://www.midj.com/images/uploads/resources/3d-midj-lea-madia-h73-dae.zip>

[.dxf Lea madia h73 \(zip\)](https://www.midj.com/images/uploads/resources/3d-midj-lea-madia-h73-dxf.zip) - <https://www.midj.com/images/uploads/resources/3d-midj-lea-madia-h73-dxf.zip>

[.obj Lea madia h73 \(zip\)](https://www.midj.com/images/uploads/resources/3d-midj-lea-madia-h73-obj.zip) - <https://www.midj.com/images/uploads/resources/3d-midj-lea-madia-h73-obj.zip>

[.stl Lea madia h73 \(zip\)](https://www.midj.com/images/uploads/resources/3d-midj-lea-madia-h73-stl.zip) - <https://www.midj.com/images/uploads/resources/3d-midj-lea-madia-h73-stl.zip>